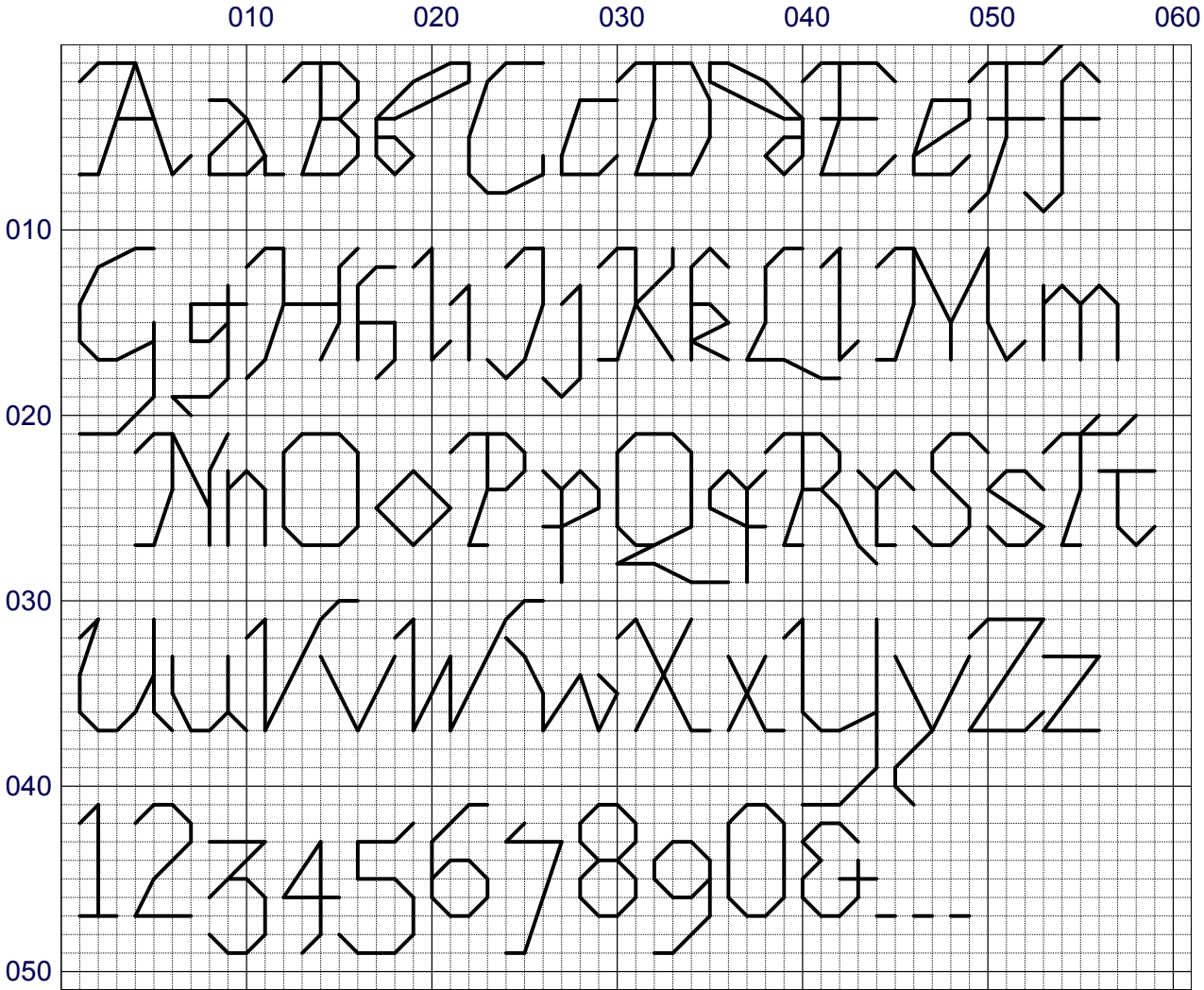


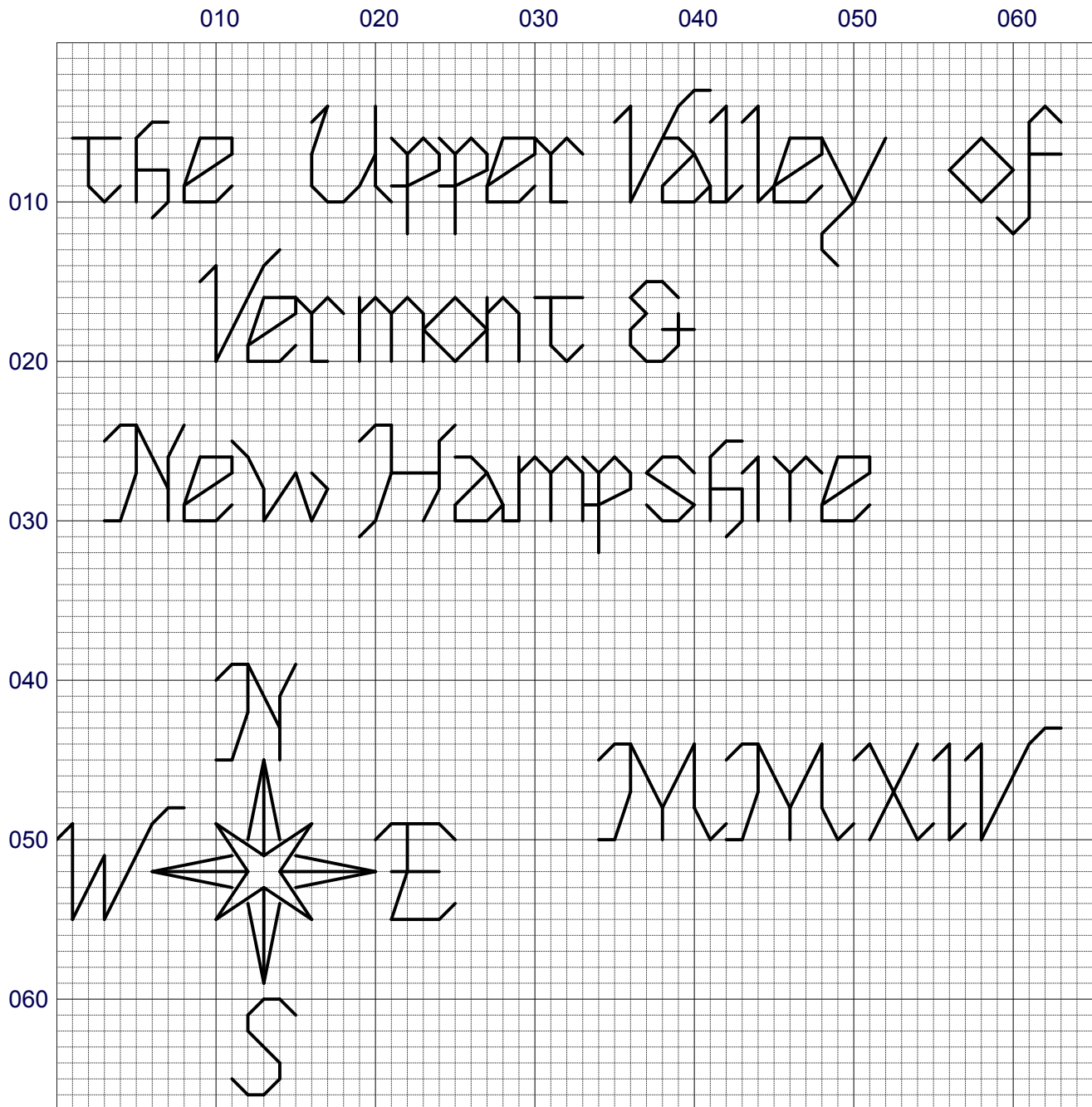
Alphabet for Blackwork

Loosely based on 15th-16th century English chancery hand and French and Italian humanistic minuscule, with an eye to legibility for modern readers. Baseline should be clear from context (line 7, 17, 27, etc); the numbers are old style, so 3, 4, 5, 7, and 9 fall below the baseline. The ampersand is followed by dashes on the baseline to clarify.



Embroidered alphabet designed 2015 by Rebecca Weber for Upper Valley Fiber Crafts, uvfibercrafts.blogspot.com.

Sample layout of title, compass rose, and year for Upper Valley blackwork map. I like this alphabet kerned fairly tightly - 1 space between letters, not counting serifs, and three between words, though I spread the top line out a bit more. Some adjustment was made by eye. The baselines of successive rows are 10 spaces apart (10, 20, and 30 here).



Embroidered alphabet designed 2015 by Rebecca Weber for Upper Valley Fiber Crafts, uvfibercrafts.blogspot.com.